

Learning for life and work



This is about supporting people so that they have more chances to learn and will get more from life.

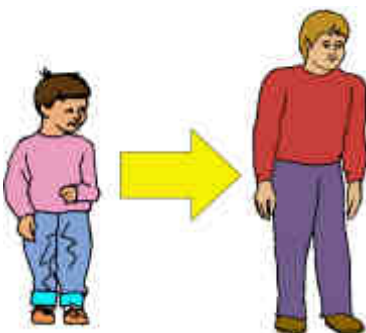


We will:

- aim to support disabled people of all ages to set up and run businesses that work for their communities



- set up a 'transition' service that will give information and training to disabled people who are aged 14 and over so that they have the skills to get good jobs.



Transition is the time when children are becoming adults.



- set up a service to help people aged between 16 and 25 live more independently

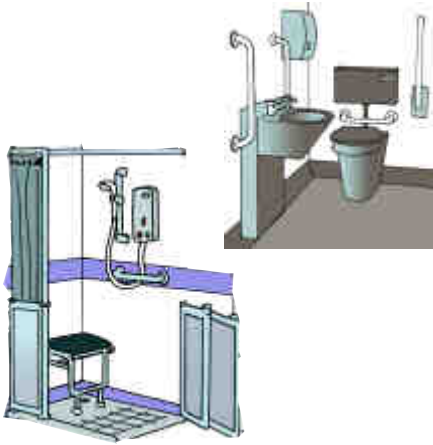


- set up a transitional residential service in the community which will help and give homes to school leavers with complex needs



People have complex needs if they have a disability and other problems, such as mental or health problems.

Homes and buildings



We want to:

- see more accessible homes built



- tell everyone about what works well when changing buildings so that people can carry on living in their own homes



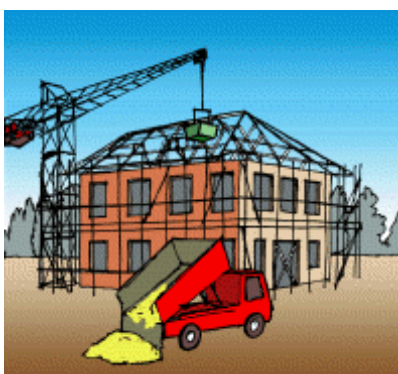
- have better access and inclusion for disabled people in all homes



We will:



- support groups we work with to use the best tests when they decide if a home is built well



- build homes that match the needs of the whole community and support others to do the same



We will do this by telling everyone how they can include disabled people when they plan buildings, building more homes and giving advice on homes.



- carry on making new homes every year so that we keep our skills and other organisations will believe what we say



- set up a new part of Papworth Trust to give advice so on making sure homes are accessible and include disabled people better.

Personal Support



These services will help people to live independently and be included in their communities.



Personal support will match each person's needs so that disabled people's lives match their hopes.

We will:



- set up a 'brokerage' service to support disabled people to manage 'individual budgets' (that is money that health and social services have set aside for them) and direct payments.



We will support people to get advice about all the services that they can have



- set up a 'Personal Assistant' (**PA**) training service to teach PAs and carers about supporting disabled people.



A Personal Assistant is a support worker who works directly for a disabled person



We will also plan a 'Papworth' Trust test that will measure how well training for PAs, carers and support workers works.



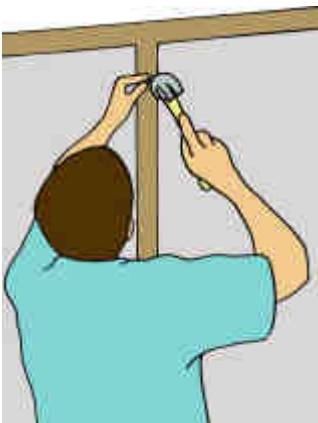
- set up a service to give advice and support to carers



- run day services in the community to support people in renting their own homes, personal care and chances for learning and leisure



- carry on giving person centred support so that people can rent their own homes and live independently



- run a service that will run and repair homes, and is accessible, easy to use and acts quickly to match the service user's needs.

Jobs and Rehabilitation



'Rehabilitation' helps people to carry on their lives if they become disabled or if they have been ill.



Papworth Trust thinks that every disabled person should have the same choice of jobs as anyone else with the same skills and qualifications.

We will:



- carry on running our job services which are paid for by the government and make sure that people who buy health and social services think that ours are among the best



- run our services so that they involve businesses that can give people jobs and help them to understand about disability



- open more centres for our 'Vocational' Rehabilitation Service while making sure that our service is still among the best



Vocational Rehabilitation helps people with the skills they need for their jobs when they become disabled or if they have been ill.



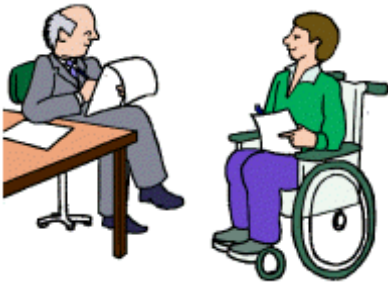
- aim to set up a rehabilitation service for people who have had an operation in hospital. This will help them get better and return to their jobs.



Empowerment



'Empowerment' is when people are given the support they need to do anything that they want. It helps them to take control of their own lives.



Disabled people need information, advice and help on the problems of independent living.



This needs to be free and from people that they can trust to give them the right information.



Papworth Trust's West Suffolk Disability Resource Centre shows that we can run these services well.



There are many other organisations that run this type of service and not enough money to go around.



We will:

- set up an advice and training service that is run by experts including disabled people.



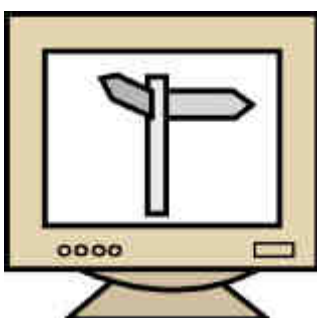
It will give advice to all kinds of organisations, helping them understand what the laws say they must do and what else they should do to fully include disabled people



- give the same good information, advice and help in all Papworth Trust services



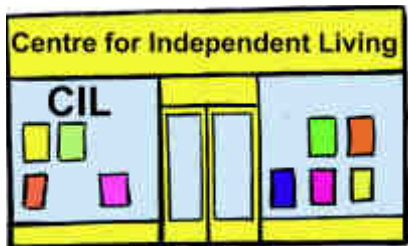
- set up the main helpdesk at Papworth to tell people about what services they can get from us and other organisations.



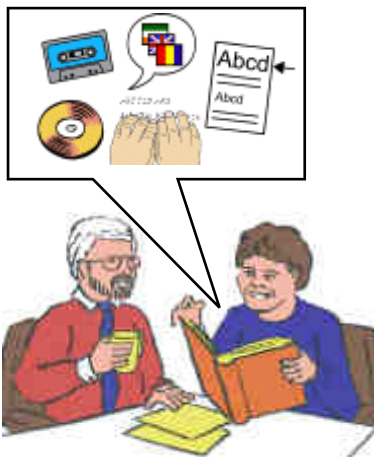
We will give links from our internet site to services, information, advice and help



- give information on services, advice and help on the Papworth Trust's computers



- look into Centres for Independent Living, perhaps with other organisations



- work with other organisations so that their information advice and help becomes more accessible.